

WRAPMASTER

1121 • 1221 • 1431 • 1631 • 1851 • 1124 • 1634 • 4034



EVOLVING AGRICULTURE

ROUND AND SQUARE BALE WRAPPERS



DEUTZ-FAHR WRAPPERS

DEUTZ-FAHR provides a complete program of innovative agricultural machines.

A high quality, reliability and well handling are very important features in the development of the DEUTZ-FAHR machines.

Every step in the wrapping process has to be coordinated and optimized, taking in account crop conditions, field conditions and weather forecasts as well as crop handling and storage.

Perfect wrapped bales combined with a high output and outstanding durability ensures that the DEUTZ-FAHR wrappers will be a profitable investment.



DEUTZ-FAHR's Research & Development department is constantly improving the Round and Square Bale Wrappers to stay in front with innovations like: IntelliWrap™, 3D wrapping and AUTOLOAD.

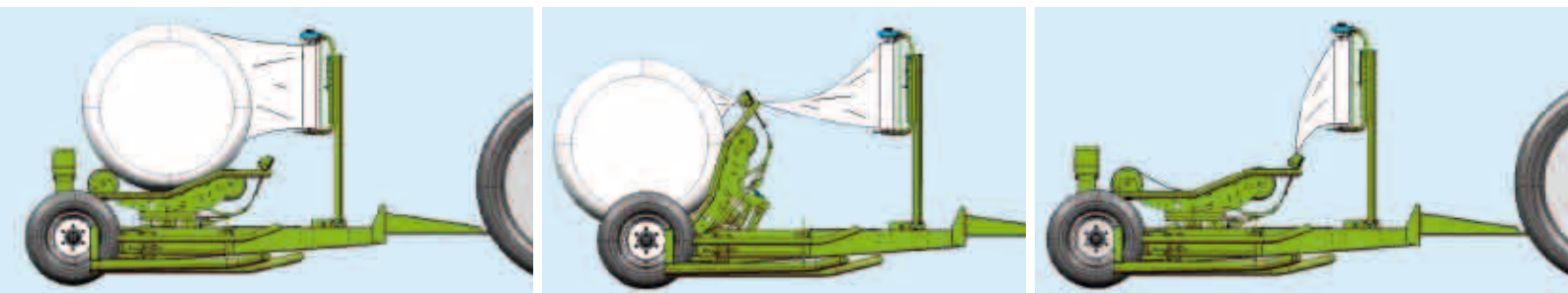
DEUTZ-FAHR offers the most complete and versatile range of individual wrappers available for the market. DEUTZ-FAHR wrappers are not only fast and efficient, but reliable as well.

GENERAL FEATURES

The uniquely designed features of DEUTZ-FAHR bale wrappers make them stand out in the market. The pre-stretchers, film cutters, wrapping table and low-profile chassis design make DEUTZ-FAHR bale wrappers simple, convenient, fast and efficient.

Low-profile chassis design

The DEUTZ-FAHR trailed turntable wrappers have a unique low-profile design that ensures maximum stability when loading, wrapping or unloading a bale. The rear axle location provides a low table height which eliminates the need for a (active) fall damper. In addition, there is a constant weight transfer to the tractor, which eliminates up-and-down movements of the drawbar and prevents tractor wheel slippage when driving uphill with a bale on the table or loading arm.



Pre-stretchers

The standard pre-stretchers hold a 750 mm (30") roll and are made of aluminum to avoid buildup of tack from the film. Both outer ends of the aluminium rollers are cone-shaped, to maintain the optimum width of the film and reduce the risk of film tear.

The special ribbed profile of the aluminum rollers keeps air away from the film. The location of the pre-stretchers makes it very easy to change the film rollers. The standard pre-stretch of 70% is reached by a low-maintenance and low noise gear transmission.

Film cutters

Once the correct amount of film layers are applied, the film needs to be held firmly and cut. On the turntable wrapper models, a springloaded or hydraulic film cutter holds and cuts the film automatically without any extra controls to operate.

On DEUTZ-FAHR satellite wrappers, the well-known "scissors-type" cutters hold and cut the film. Due to its design, the film is caught on its full width. The film is held with a clamp, stretched into one solid strand, and then cut before the bale is unloaded.

The spring-loaded clamp continues to firmly hold the film for the next bale.





Square turntable

The DEUTZ-FAHR medium-square-bale turntable wrappers are equipped with two pair of steel rollers that have a ribbed profile. This profile ensures maximum bale traction, even bale rotation and proper film overlap. On the WM 1124 & 1634 models, two large bale support rollers provide additional bale stability and guidance. Round bales can also be wrapped on this table.

Control systems

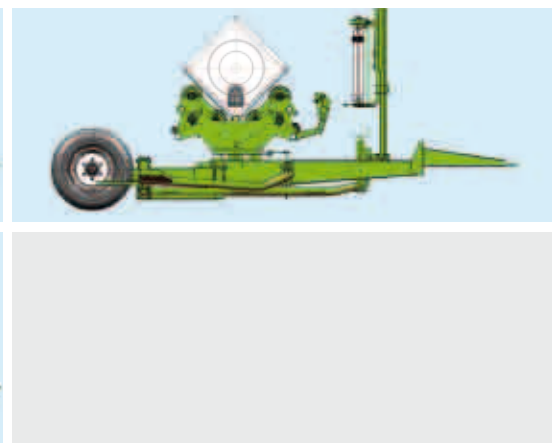
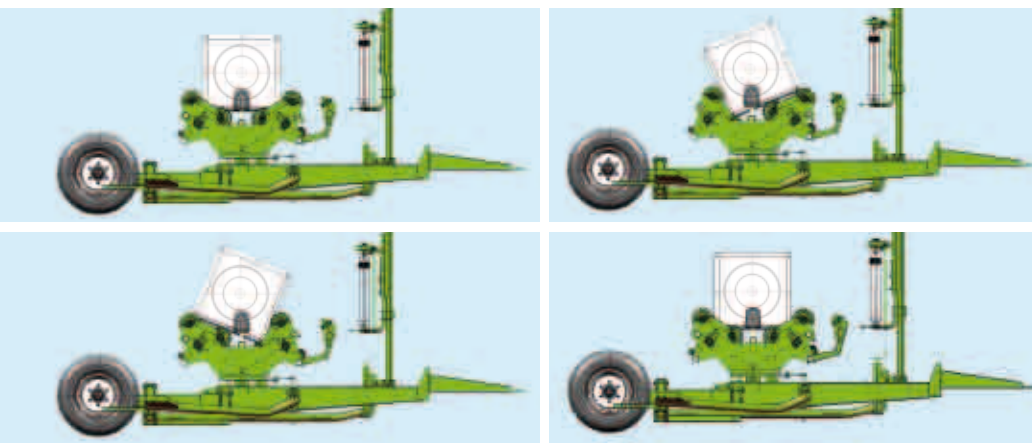
Depending on the model, and preferences of the driver, three different control systems are available:

- The manual version is controlled with cable levers but can be upgraded with bale-and-wrap counter and autostop. The bale-and-wrap counter helps the operator by counting film layers and total number of wrapped bales. The autostop function will automatically stop the wrapping table/satellite after the total number of film layers are applied. This turns a manually-controlled wrapper into a semi-automatically-controlled wrapper.
- The electro-hydraulic joystick automatically steers the bale discharge, among other direct functions.
- The computer-controlled version uses a control box that provides all the information and possibilities for fully-automatic operation of the entire wrapping process.

Round turntable

The DEUTZ-FAHR round bale turntable wrappers are equipped with two drive rollers and wide-spaced belts.

This design provides a deep and stable cradle for the bale on the wrapping table. In addition, two large bale support rollers provide more stability and guidance. Wide-spaced belts provide maximum traction and even rotation for the bale. Even bale rotation is critical to ensure correct film overlap for good conservation and crop quality throughout the storage period.



Square turntable models

The two adjustable roller pair configuration secures an even bale rotation resulting in a proper sealing at different bale dimensions.

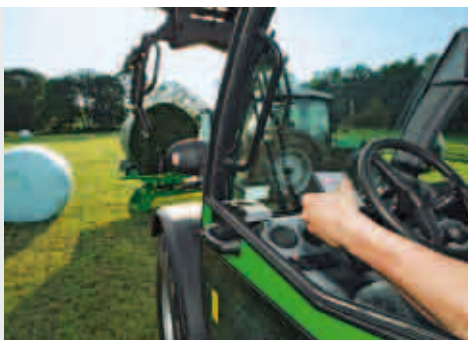
WM 1121



The WM 1121 is ideal for 'wrap and stack' operations in the field or at the storage place. Wrapping at the storage place means a minimum risk of film damage. This combination allows for a one-man wrapping operation.

Two models are available: manual control or computer control with standard remote

The WM 1121 manual version is controlled with cable levers but can be upgraded with bale-and-wrap counter and autostop. These levers can also be mounted onto the wrapper near the pre-stretcher. The bale-and-wrap counter helps the operator by counting film layers and total number of wrapped bales. The autostop function will automatically stop the wrapping table after the total number of film layers are applied. This turns a manually-controlled wrapper into a semi-automatically-controlled wrapper. The computer-controlled version uses a control box and remote control that provides all the information and possibilities for fully-automatic operation of the entire wrapping process.



With the remote control the wrapper can be operated from a loader while using a power pack (hydro unit) or second tractor for the oil and powersupply towards the wrapper.

WM 1221



The WM 1221 self-loading round bale wrapper is capable of loading, transporting and wrapping the bale on the go. The 3-point mounted design positions the weight close to the tractor, which contributes to the stability and weight distribution during wrapping/transport.

Two models are available: manual control or computer control

Only two levers control the manual version of the WM 1221, which is standard equipped with a bale-and-wrap counter and auto satellite stop. This turns a manually-controlled wrapper into a semi-automatically-controlled wrapper. A fully computer-controlled model with standard slow start wrapping speed function is available.

Hydraulic “scissors-type” film cutter

The hydraulic “scissors-type” film cutter holds and cuts the film firmly in its position, ready for the next bale to come. Changing the film roll is easily done standing safely on the ground next to the machine. The WM 1221 can be equipped with an optional satellite counterweight, a ground support roller, and an extra bale-support roller.



WM 1431



The no-nonsense WM 1431 is the most versatile selfloading round bale wrapper. The manual version is controlled with cable levers but can be upgraded with bale-and-wrap counter, and autostop. This turns a manually-controlled wrapper into a semiautomatically- controlled wrapper. The computer-controlled version with new electronics uses a terminal with integrated joystick that provides all the information and possibilities for fully automatic operation of the entire wrapping process and standard automatic stop by end of film / film tear. The WM 1431 will lift bales up to 150 cm (5') in diameter and 1000 kg (2200 lbs) without problems, due to its unique low-profile chassis design with wide track wheels.



The rear axle location provides a low table height and constant weight transfer to the tractor, which eliminates up-and-down movements of the drawbar. The low table height eliminates the need for a (active) fall damper, while the consistent drawbar weight prevents tractor wheel slippage when driving uphill with a bale on the table or loading arm. An optional bale turner can be added so that the bale is discharged on its flat end.



During road transport, the right-hand wheel can be folded inward



WM 1631



The WM 1631 is the choice for those who demand higher capacity and efficiency. Three different models are available.

- **The manual version is controlled with cable levers and standard equipped with bale-and-wrap counter and autostop. This turns a manually-controlled wrapper into a semi-automatically-controlled wrapper.**
- **The electro-hydraulic joystick automatically steers the bale discharge, among other direct functions.**
- **The computer-controlled version uses a control box that provides all the information and possibilities for fully-automatic operation of the entire wrapping process. The WM 1631 is capable of lifting bales up to 1200 kg (2650 lbs).**



On-the-move loading increases efficiency

The unique WM 1631 design incorporates counter-weight in the left-hand axle, allowing it to load and carry a second bale in the loading arm on the move, which increases efficiency. The rear axle location provides a low table height and constant weight transfer to the tractor, which eliminates up-and-down movements of the drawbar. The low table height eliminates the need for a (active) fall damper, while the consistent drawbar weight prevents tractor wheel slippage when driving uphill with a bale on the table and/or loading arm.

New electronics; the completely new electronics result in increased functionality, ergonomics, safety and capacity. The machine is controlled with an easy and full automatic computer system with integrated joystick and standard automatic stop by end of film / film tear. This new electronics in combination with the AUTOLOAD system has made the WM 1631 C one of the fastest single pre-stretcher turntable wrapper on the market. The new WM 1631 C has an integrated AUTOLOAD function: AUTOLOAD is a new innovative system that automatically picks up a bale with the loading arm and puts it on the wrapping table, without any action needed from the driver. Picking up a second bale with the loading arm during the wrapping process is possible; the bale will be picked up half way up and be held there. When the wrapping process is ready the waiting bale automatically gets loaded further on the wrapping table. The driver can hold both hands on the steering wheel and doesn't have to push a button over and over to load the bales.

WM 1851



The WM 1851 is a high-capacity wrapper with the latest technologies. The patented loading system, with its loading arm integrated in the wrapping table, allows the bale to gently roll onto the wrapping table, which then tilts to its level position in order to start the wrapping process. This design allows the wrapper to operate either behind a tractor or directly behind a baler. The WM 1851 loads and unloads in line with the balers driving direction.

An extended range of features and options makes the WM 1851 one of the most advanced and flexible twin-satellite bale wrappers on the market. With manual, joystick or computer controls, single or twin satellites, conventional or 3D wrapping, oversized wheels, a bale turner or remote control, the WM 1851 can be equipped according your demands!

The WM 1851 (c model) uses the twin-satellite wrapping system, the same as on the DEUTZ-FAHR BalePack models. On the computer-controlled models, a proportional valve ensures gentle handling of the film by soft action of speeding up and slowing down the wrapping cycle. This helps avoid the risk of film tear at the start of the wrapping cycle in certain weather conditions. An optional film end/break sensor is available, which warns the operator of an empty film roll or breakage, eventually allowing the satellites to slow down to half speed to finish the bale with only one pre-stretcher in use.





The WM 1851 will lift bales up to 150 cm (5') in diameter and 1400 kg (3100 lbs) without problems, due to its unique design. It doesn't need a powerful tractor, additional counterweights, or a (active) fall damper. The twin support tower guarantees accurate tracking and stability of the satellites around the bale in various field conditions.

3D wrapping

The WM 1851 can also be equipped with the well-known 3D wrapping system. 3D wrapping is an intelligent and innovative way of applying stretch film to round bales. Key to the 3D wrapping process is its ability to distribute the total film quantity more uniformly and efficiently across the entire surface of the bales. By first wrapping the cylindrical surface of the bales, more air is excluded. In addition the edges and the shape of the bales are maintained, even after a longer storage period.

With the pre-stretchers in their horizontal position, only the bale is rotated on the wrapping table. After closing the cylindrical site of the bale, the pre-stretchers return to their vertical position to apply the remaining layers and finish wrapping the bale.



WM 1124



The WM 1124 is a 3-point bale wrapper that can wrap medium square bales 80 cm x 60-90 cm (3x3) up to 180 cm (6') in length, and round bales up to 150 cm in diameter (up to 5x5 bales). The two pair of steel rollers provide a deep cradle for the bale and even rotation to ensure proper film overlap. The hydraulic film cutter has a longer stroke to help accommodate various bale lengths. It also ensures a firm hold and a clean cut of the film in various weather conditions.

Two versions are available; a manually-controlled and computer-controlled with standard remote control. The WM 1124 manual version is controlled in the tractor cab with two cable levers. These levers can also be mounted onto the wrapper near the pre-stretcher. The manual version is standard equipped with bale-and-wrap counter and autostop. This turns a manually-controlled wrapper into a semi-automatically-controlled wrapper. The computer-controlled version uses a control box that provides all the information and possibilities for fully-automatic operation of the entire wrapping process.



The low table height allows the bale to be gently tipped off to prevent film damage.

With the remote control the wrapper can be operated from the loader while using a power pack (hydro unit) or second tractor for the oil and powersupply towards the wrapper.

WM 1634



The WM1634 can be equipped with two different control systems. The manual version is controlled with cable levers and standard equipped with bale-and-wrap counter, and autostop. This turns a manually-controlled wrapper into a semi-automatically-controlled wrapper. The computer-controlled version uses a control box that provides all the information and possibilities for fully-automatic operation of the entire wrapping process.

The WM 1634 is a trailed, self-loading bale wrapper that can wrap medium square bales 80 cm x 60-90 cm (3x3) up to 180 cm (6') in length, and round bales up to 150 cm in diameter (up to 5x5 bales). The two pair of adjustable steel rollers provide a deep cradle for the bale and even rotation to ensure proper film overlap. The hydraulic film cutter has a long stroke to help accommodate various bale lengths. It also ensures a firm hold and a clean cut of the film in various weather conditions. The automatic parallel loading arm, with adjustable bale length support, ensures trouble-free, gentle, on-the-move bale loading. Due to its unique low-profile chassis design with wide track wheels a second bale can be carried during wrapping to increase efficiency.

For road transport the wheels can be folded inwards to reduce the transport width. Hydraulic folding is optional.

The low table height allows the bale to be gently tipped off to prevent film damage.



WM 4034



IntelliWrap™

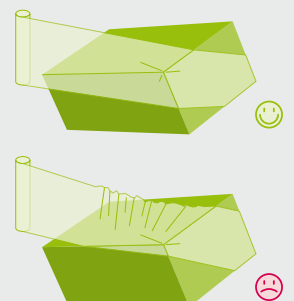
The WM 4034 is a trailed, self-loading bale wrapper that can wrap medium square bales 80 cm x 60-90 cm (3x3) up to 180 cm (6') in length, and round bales up to 150 cm in diameter (up to 5x5 bales). The two pair of adjustable steel rollers provide a deep cradle for the bale and even rotation to ensure proper film overlap. The hydraulic film cutter has a long stroke to help accommodate various bale lengths. It also ensures a firm hold and a clean cut of the film in various weather conditions. The automatic parallel loading arm, with adjustable bale length support, ensures trouble-free, gentle, on-the-move bale loading. Due to its unique low-profile chassis design with wide track wheels a second bale can be carried during wrapping to increase efficiency.

Wheels: The 15.0/55-17 wheels ensures maximum flotation combined with minimum soil compaction. Standard mudguards prevent film damage during transport. Road lights with integrated deflectors are as standard.

Bale sizes: The WM 4034 is capable of wrapping up to 1500 kg/ 3300 lbs:

- Large square bales of (W x H x L) 120 cm x (60 cm - 100 cm) x 200 cm (Up to a 4x4 bale 6.5 foot long), including double bales of 120 cm x 70 cm x 200 cm (two stacked 2x4 bales 6.5 long).
- Medium square bales of (W x H x L) 80 cm x (60 cm - 90 cm) x 200 cm (3x3 bale up to 5'11" long).
- Round bales up to 140 cm / 5 foot in diameter without any optional equipment.

Bale handling: The two pair of steel rollers with shorter top rollers are driven and lifted via central placed gearboxes. This **patented** roller design is loading the bale horizontally without the risk of soil contamination. The bale is placed in its pre-defined position for wrapping. By use of the shorter top roller design the film roll holders can be positioned as low as possible. Due to this the film is wrapped more over the centre of the bale preventing wrinkling and creating a maximum oxygen barrier for excellent silage quality.





The hydraulic sliding system and drawbar reduce the transport width to only 250 cm / 8 feet only.

ISOBUS: The WM 4034 is the first ISOBUS compatible individual bale wrapper. Predefined bale dimensions and number of film layers are easily selected with simple push-button controls. The WM 4034 automatically adjusts the wrapping process to match the oil flow from the tractor. The standard integrated half speed wrapping function can be activated any time during the wrapping process, either manually or automatically via the optional film break sensor. Overall capacity has increased with the use of ISOBUS and IntelliWrap™ to keep up with the balers capacity. These advanced, yet simple, controls help this wrapper meet the demands of today's contractors. ISOBUS compatible tractors do not require a separate terminal. Alternatively DEUTZ-FAHR offers two different terminals, the CCI 100 and the VT 50.

PTO driven oil supply

Despite the WM 4034 only requires 40-60 l/min - 11 to 16 gallons/min, it can be equipped with an optional PTO driven oil supply. This way the WM 4034 can be used in combination with all kind of tractors independent of their oil supply. The PTO driven oil supply, with standard load-sensing, can easily be mounted on the drawbar without limiting maneuverability.

IntelliWrap™

By utilizing IntelliWrap™ on the WM 4034, more precise management and control is achieved. IntelliWrap™ uses sophisticated electronics and hydraulics to monitor the wrapping process and continuously controls the film overlap, allowing total flexibility. Depending on local circumstances, crop conditions and storage periods the operator simply adjusts the amount of requested film layers (4, 5, 6, 7, 8, 9...) via the terminal. IntelliWrap™ automatically matches this request to the various bale dimensions. Overall this system provides excellent distribution of the film around the bale and precise overlap for maximum film efficiency and increased silage quality.

CCI 100

The ISOBUS compatible CCI 100 terminal has a large 21,6 cm (8.5") color screen with outstanding clarity. Baling adjustments can be easily made via the touch screen or by use of the intuitive, large, soft-touch keys. The CCI 100 terminal can also be used with many other ISOBUS compatible machines on the market.

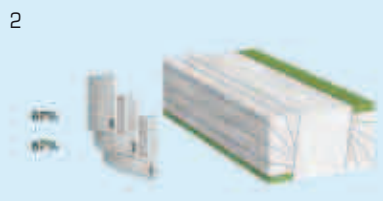


VT 50

The DEUTZ-FAHR ISOBUS VT 50 terminal has a 14,5 cm (5.7") color screen with outstanding clarity. Adjustments can easily be done by the touch screen and the large soft-touch keys on the sides. The VT 50 terminal can be used specifically with the DEUTZFAHR ISOBUS Balers and Wrappers.



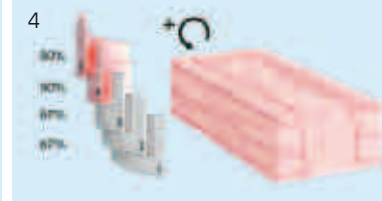
Selection of 5 film layers



The bale is covered with 3 layers and 67% overlap



Increasing of the bale rotational speed



Final 2 layers with 50% overlap



Weapmaster

SPECIFICATIONS

SPECIFICATIONS	WM 1121	WM 1221	WM 1431	WM 1631	WM 1851	WM 1124	WM 1634	WM 4034
Weight and dimensions								
Total Length (m/ft.)	2.51 / 8' 4"	2.27 / 7' 6"	2.51 / 8' 4"	4.20 / 13' 9"	4.47 / 14' 8"	2.47 / 8' 1"	4.86 / 16'	4.70 / 15'5"
Transport width (m/ft.)	1.78 / 5' 10"	1.32 / 4' 4"	2.45 / 8' 1"***	2.69 / 8' 10"	2.55 / 8' 5"	2.29 / 7' 6"	2.49 / 8' 2"***	2.50 / 8'2"
Weight (kg/lbs.)	700 / 1550	700 / 1550	1000 / 2200	1550 / 3400	1100 / 2425	955 / 2100	1490 / 3300	2740 / 6041
Height in transport (m/ft.)	2.03 / 6' 8"	2.43 / 8'	2.28 / 7' 6"	2.58 / 8' 6"	3.06 / 10'	2.03 / 6' 8"	2.29 / 7' 6"	2.75 / 9'
Wheel dimensions standard	-	-	10 / 80-12"	15 / 55-17"	11.5 / 80-15.3"	-	15 / 55-17"	15.0/55-17
Wheel dimensions optional	-	-	360 / 55-12"	10.5 / 80-18"	400 / 60-15.5"	-	-	19.0/45-17
Bale dimensions								
Max bale size round (width x diameter) (m)	1.25 x (1.00 x 1.50)					(1.20-1.50) x (1.00-1.50)	(1.20-1.50) x (1.00-1.50)	(1.20-1.50) x (0.90-1.50)
Max bale size square (width x height x length) (m)	-					0.80 x (0.60-0.90) x 1.80	0.80 x (0.60-0.90) x 1.80	0.80 x (0.60-0.90) x 2.00 1.20 x (0.60-1.00) x 200
Max bale weight (kg/lbs.)	1200 / 2650	1200 / 2650	1000 / 2200	1100-1200** / 2425-2650**	1400 / 3100	1200 / 2650	800-1000** / 1775-2200**	1500 / 3307
Oil consumption (l/min)(gal./min)	26 / 7 at 150 bar	24 / 7 at 150 bar	26 / 7 at 150 bar	26 / 7 at 150 bar	35 / 9 at 150 bar	26 / 7 at 150 bar	26 / 7 at 150 bar	40 to 60 / 11 to 16 at 180 bar
Operation								
Cable controlled valve bank (m)	■	■	■	■	■	■	■	-
Electro-hydraulic joystick controls (s)	-	-	-	○	○	-	-	-
Programmable computer controls (c)	○	○	○	○	○	○	○	■
Remote control (c)	■	-	○	○	○	■	○	-
ISOBUS control	-	-	-	-	-	-	-	■
Film cutter	■	■	■	■	■	■	■	■
Pre-stretcher								
One pre-stretcher 750 mm (30")	■	■	■	■	■	■	■	-
Two pre-stretcher 750 mm (30")	-	-	-	-	○	-	-	■
Adapter for 500 mm (20") film	○	-	○	○	-	-	-	-
Option								
Film roll magazine/stock	○ / 3	-	○ / 3	○ / 2x3	○ / 3x2	-	○ / 2x3	■ / up to 10
Bale-and-wrap counter (m model)	○	■	○	■	■	■	■	■
Autom. stop when end of cycle (m model)	○	■	○	■	■	■	■	■
Autom. stop by end of film / film tear (c model)	○	-	■	■	○	○	○	○
Rubber drop mat	-	-	○	○	○	-	○	-
Bale turner, to put bale on its flat end	○	-	○	○	○	-	-	-
Road lights	-	-	○	■	■	-	■	■
1/2 speed by film end / film break (c)	-	-	-	-	○	-	-	■

■ = standard equipment ○ = optional equipment - = not available ** Fitted with extra counter weight *** Wheels folded for transport

SURE AND SAFE WITH ORIGINAL DEUTZ-FAHR SERVICE AND PARTS



Original service is wise

Only your DEUTZ-FAHR specialist dealer knows your machine inside and out. Only your dealer has regularly trained mechanics and experts on call. Only dealers have the special tools and diagnostic equipment required for competent diagnosis and inspection. All this gives you peace of mind – without doubt.

Original parts make good sense

As you placed your trust in the original machine, we recommend you use original parts when required. Only these comply with the high quality and safety standards of DEUTZ-FAHR and ensure correct function and operation without problems – guaranteed.

DEUTZ-FAHR lubricants

We recommend genuine DEUTZ-FAHR lubricants. The outstanding quality of this product range, which is made exclusively for DEUTZ-FAHR, ensures that your machine always receives exactly what it needs.



Your DEUTZ-FAHR dealer will be pleased to answer your questions:

This printed material is designed for international use. The illustrations it contains show both special equipment and incomplete standard equipment. The availability of some illustrated models, standard and special equipment can vary from country to country. Only the dealer's price list stipulates whether such illustrated equipment is included as a standard feature or whether it is a special accessory. In addition the illustrated mounted implements and special accessories may not always comply with the respective statutory regulations. It is the responsibility of the customer – after consultation with the dealer – to verify this, taking the operating instructions into account. All information and illustrations in this brochure are subject to correction; errors excepted. Furthermore all information contained in this brochure is not binding and is subject to modifications of a technical and commercial nature or those resulting from statutory regulations. No claims whatsoever can be derived from these. SAME DEUTZ-FAHR DEUTSCHLAND GmbH reserves the right to make any changes to the design and technical construction and also the scope of standard equipment at any time and without prior notice.

Order no.: ZPDJ0268 A 03-12



EVOLVING AGRICULTURE